

Figure 1: Proposed notation for depicting qualitatively different types of information flows, and their shifts in and out of the digital realm. Dotted arrows represent digital information flows, and rhomboids descriptions of digital data. Whole arrows represent analog, continuous, real-world information flows, and trapezoids contain their descriptions. Boxes with doubled vertical sides describe a shift into or out of the digital realm, while simple boxes (not shown) represent more complex objects such as AI components or humans.

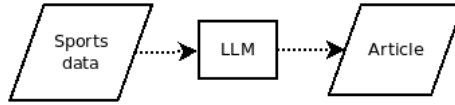


Figure 2: A schematic model of an LLM producing an article from information gathered from an API.

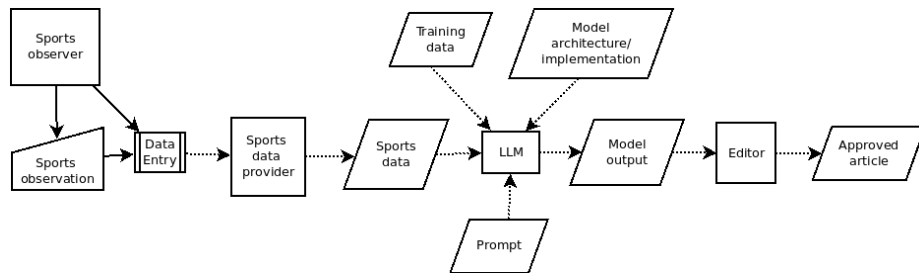


Figure 3: A more complex and complete view of an LLM producing an article from an information packages, including the labour required to create its abstracted inputs and situate its abstract output.

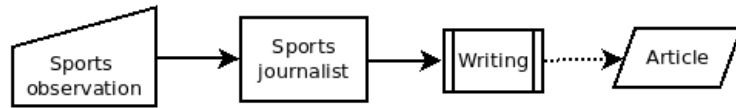


Figure 4: A schematic model of a human writing an article.

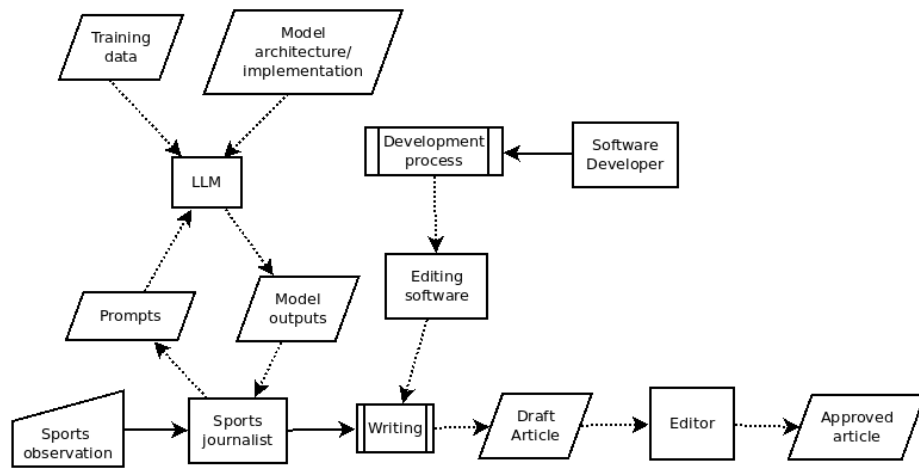


Figure 5: A more complex model of a human writing an article using various technical tools.