

Nils-Eric Fougstedt

Romanssi
Romans
Romance

Katariina ja Munkkiniemen kreivi
Katarina och greven av Munksnäs
Katarina and the Count of Munkkiniemi

1943

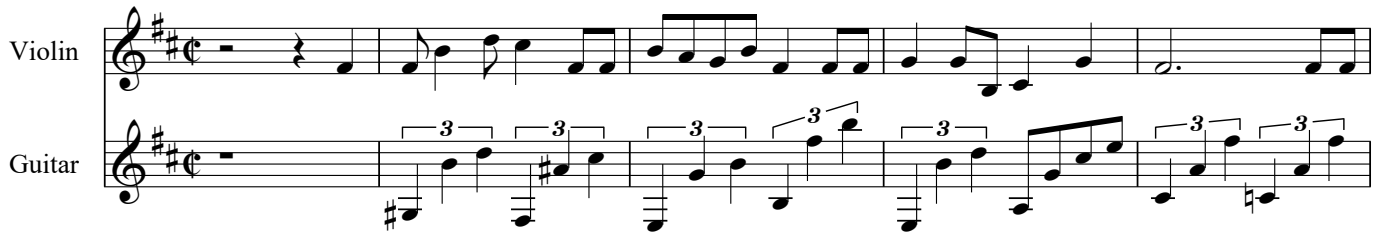
Romanssi - Romans

Katarina ja Munkkiniemen kreivi - Katarina och greven av Munksnäs

Nils-Eric Fougstedt
Arr. Patrik Eklund

Violin

Guitar



6

Vln.


Gtr.



11

Vln.

Gtr.



16

Vln.

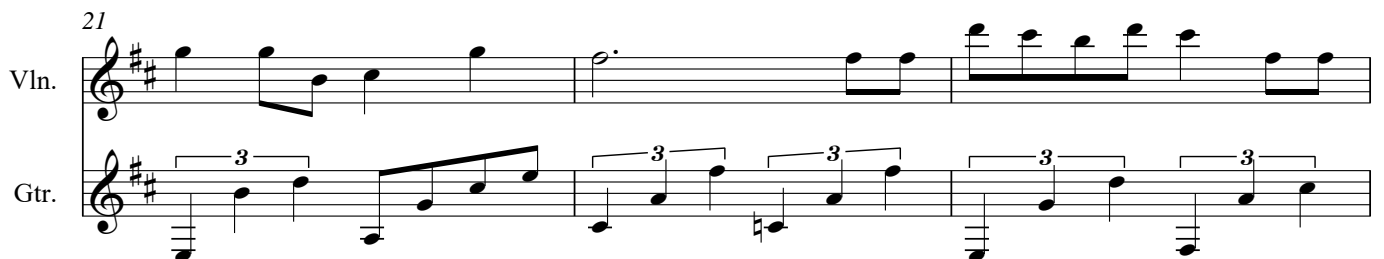
Gtr.



21

Vln.

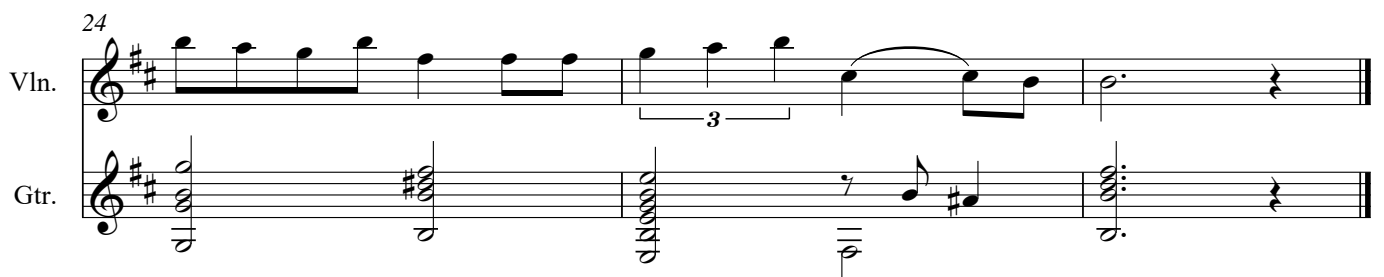
Gtr.



24

Vln.

Gtr.



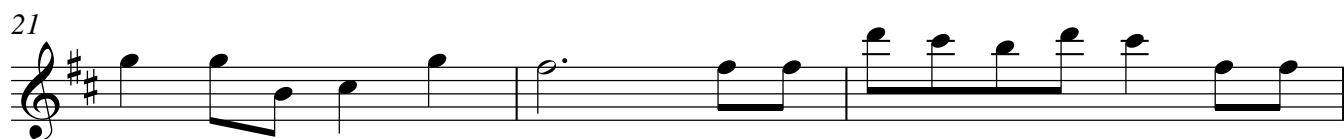
Violin

Katariina ja Munkkiniemen kreivi - Katarina och greven av Munksnäs

Romanssi - Romans

Nils-Eric Fougstedt

Arr. Patrik Eklund



Guitar

Katariina ja Munkkiniemen kreivi - Katarina och greven av Munksnäs

Romanssi - Romans

Nils-Eric Fougstedt

Arr. Patrik Eklund

The sheet music is written for guitar in treble clef, with a key signature of two sharps (D major) and a common time signature (C). It consists of six staves of music. The first staff (measures 1-5) features a melodic line with several triplet markings. The second staff (measures 6-10) includes a double bar line, a first ending bracket, and a second ending bracket. The third staff (measures 11-15) continues the melodic line with more triplets. The fourth staff (measures 16-20) shows a more complex rhythmic pattern with triplets and rests. The fifth staff (measures 21-23) continues the melodic line with triplets. The sixth staff (measures 24-28) concludes the piece with a final cadence, including a double bar line and repeat signs.